



**MAKING
ENVIRONMENT
AROUND YOU
PLEASANT**



JCB PROMAX HVLS FANS



PROMAX HVLS FANS

For distributing high volume of air in large spaces, creating a gentle air movement. The fan enables a perceived temperature to be cooler by 4° to 6° C. Replaces multiple wall mounted fans, and reduces the operating costs upto 80% when compared with other fans.

WHY OUR HVLS FANS ARE ONE OF THE BEST IN CLASS

- German make IE3 motors, for zero maintenance
- Patented design enables 50% increased coverage area
- Control panel with & touch screen, make it user friendly
- Denmark (Danfoss) make VFD, gives variable speed controller to set and control airflow
- Operation in reverse direction for de-stratification
- Inbuilt primary & secondary safety

DESIGNED TO MAKE A DIFFERENCE

- Energy efficiency above statutory requirements
- Dihedral blade design enable 50% increased coverage area
- Improved life of gear motor and additional safety features



PROMAX HVLS FANS ADVANTAGES

PROMAX HVLS FANS ADVANTAGES

Extremely high level of primary safety for all components. 40mm shaft dia./ M14 bolts for structures & chassis/nylock nuts and lactate for all fasteners/steel EN 10025 - 90 for structure & chassis/GL wire ropes with additional PVC coating etc.

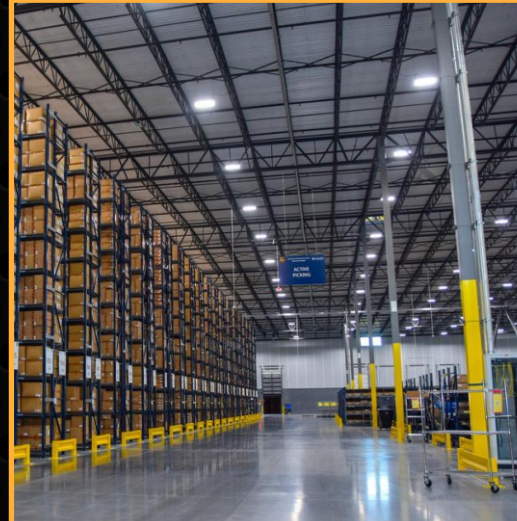
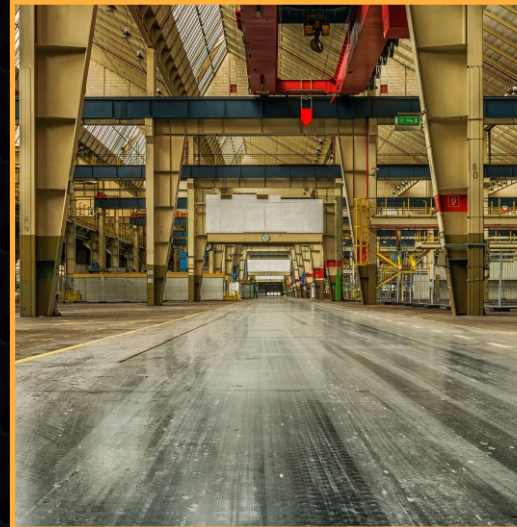
Second Anti - Fall safety systems provided for all major components

- Structure - Secondary wire rope to lock to building structure
- Blades - Embedded wire ropes in blade
- Hub - In hub assembly for anti-fall etc.

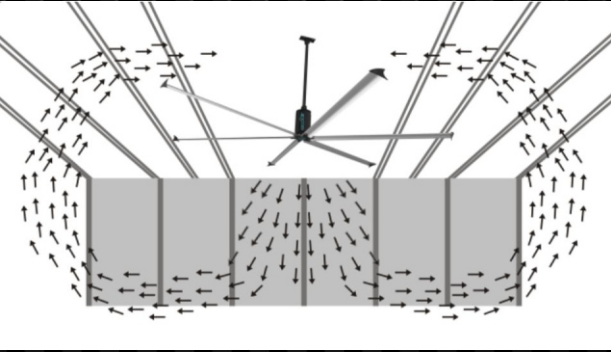
- Aerofoil blade design with blade angle of 27° for optimum air flow rate and thrust
- Tapered fan blades for uniform air distribution
- High efficiency German motor & gear box for low costs
- Can be linked to integrated building management system (IBMS) through VFD
- High grade 6061 T6 aluminum alloy used for Aerofoil blades
- Motor & gearbox with synthetic Oil & VFD from Danfoss world leaders in transmission technology
- High grade steel into 12mm thick with hot dip galvanizing for best anti corrosion protection
- GI coated wire rope with PVC coating

APPLICATIONS

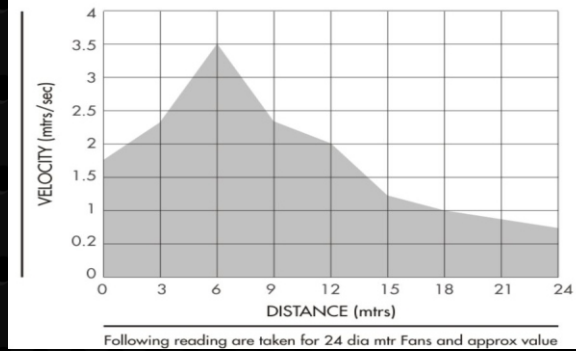
Industrial & commercial spaces like shop floors, assembly lines, warehouses, community halls, shopping malls, auditoriums etc.



HVLS FAN CONCEPT

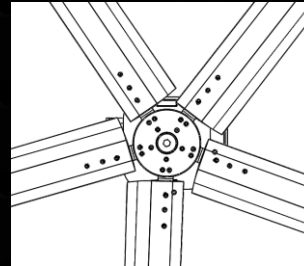
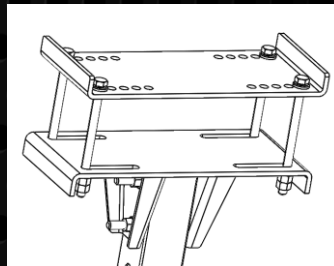
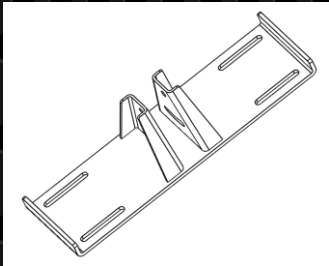


DISTANCE VS AIR VELOCITY



PROMAX HVLS FANS TECHNICAL SPECIFICATIONS

MODEL NO	FAN SIZE (Ft.)	MAX POWER (Kw)	SPEED (RPM)	AIR FLOW (CFM)	APPLICABLE AREA (Sq. Ft.) @ 0.5 Mts/Sec Air Velocity	Approx. Coverage Diameter in Mtrs
PROMAX 7J	24	1.5	52	603,000	29,700	60
PROMAX 6J	20	1.5	68	540,000	21,600	54
PROMAX 5J	16	1.1	72	477,000	16,200	45
PROMAX 4J	12	1.1	86	405,000	10,800	36
PROMAX 3J	10	0.75	122	288,000	8,100	27
PROMAX 2.4J	8	0.75	122	225,000	6,300	20



ABOUT JCB AIRTECH

JCB, being one of India's leading construction equipment manufacturers, offers indigenous, world-class, and versatile solutions to ease ground work for the construction industry. With an exceptional range of construction equipment and millions of happy customers, JCB, truly, has pioneered an era of engineering excellence.

We added a Hand & Power Tools Segment, a logical extension to business. With our success in Europe, we have now ventured into the Indian market to satisfy the growing need for superior quality Hand Tools. Using the collective experience we have developed yet another range of products for the industrial segment, for air distribution, cooling and ventilation.

AIR DISTRIBUTION, COOLING AND VENTILATION SOLUTIONS FROM AIRTECH ARE



INNOVATIVE



HIGHLY EFFICIENT



**HIGHER
SPECIFICATION**



FUTURE FIT

- IOT COMPLIANT
- INDUSTRY 4.0 READY

JCB AirTech India are an official partner of J.C. Bamford Excavators Ltd (JCB)

JCB AirTech India is operated by

ECOAIR COOLING SYSTEMS PVT. LTD.

S.NO. 255/1, TIRUMALA INDUSTRIES ESTATE, PHASE I

RAJIV GANDHI INFOTECH PARK, HINJEWADI,

PUNE - 411057, MAHARASHTRA, INDIA

Tel +91. 8956926173

E-Mail care@jcb-air-tech.in, marketing@jcb-air-tech.in

Url www.jcb-air-tech.in

